



HACKHAM'S YOUNG PARENT GROUP

WHERE INNOVATION MEETS EARLY INTERVENTION

ACKNOWLEDGEMENT OF COUNTRY

We acknowledge that we walk, live and work on traditional Aboriginal lands, and we pay our respects to Elders past, present, and emerging.

Junction celebrates the diversity, strength and resilience of Aboriginal and Torres Strait Islander peoples. We acknowledge the grief, trauma and loss of past and present harm and are committed to working together to create opportunities for healing, learning, growth and a brighter future.

RESEARCH CONTEXT

The hypothesis for the program used BetterStart research to establish the intervention point:



80%

of families in contact with DCP include a parent aged under 20 during pregnancy of first child.

6%

of mothers ages under 20 at first birth go on to give birth to **57%** of children who have an episode of OOHC.

These **6%**

of mothers contributed to over **1/3** of the total population of children notified to DCP.

68%

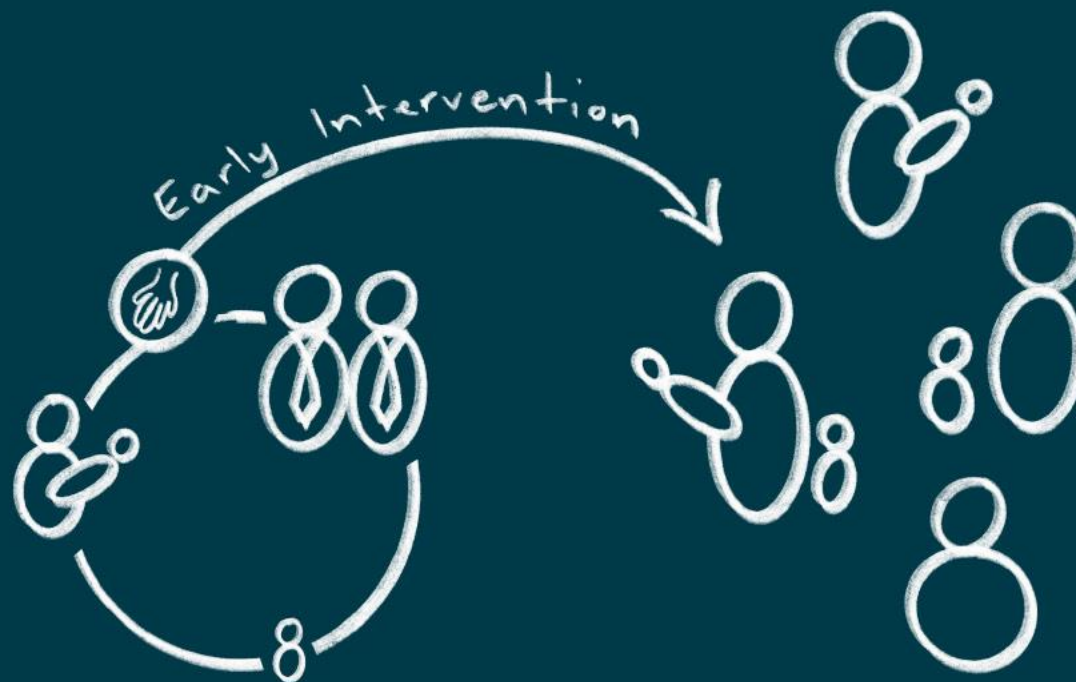
had their own experience in child protection with **23%** of them having been in OOHC.

Interventions that target young parents have an opportunity to disrupt this intergenerational cycle.



WHAT WE ARE HOPING TO ESTABLISH: A NEW WAY OF KEEPING FAMILIES TOGETHER

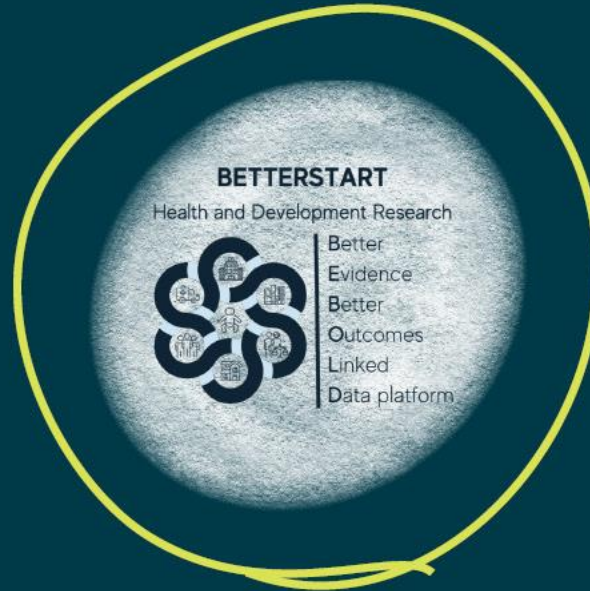
- A new model of evidence based in early intervention - that works
- Better child development by supporting young parents with age-appropriate parenting support
- Prevention of contact with the child protection system
- High levels of parent voluntary engagement & retention
- A peer workforce that enables change



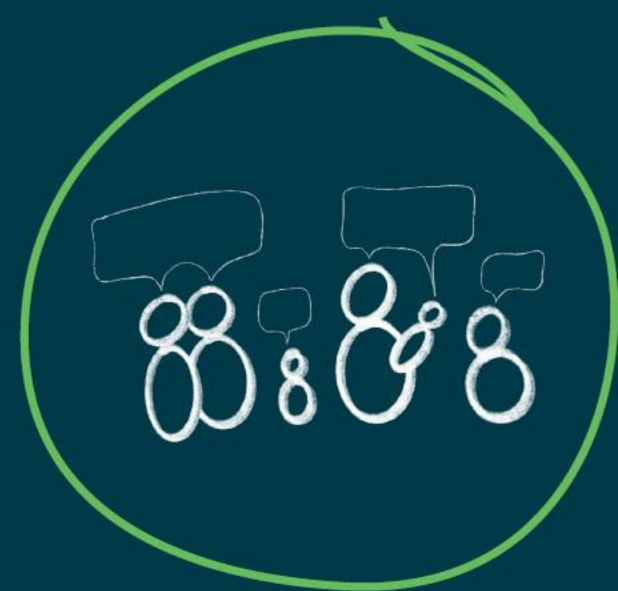
MIXED METHODS EVALUATION



**TRADITIONAL
TOOLS**



**BEBOLD PLATFORM
(Linked Population Data)**



**LIVED EXPERIENCE
FEEDBACK**



RELATIONSHIPS AND CONNECTION

- Acknowledging suspicion of service providers
- Building relationships and engagement takes time
- Our intake process mirrors social and emotional wellbeing models
- Plan initial sessions to encourage connection and safety within the group
- Importance of good hosting

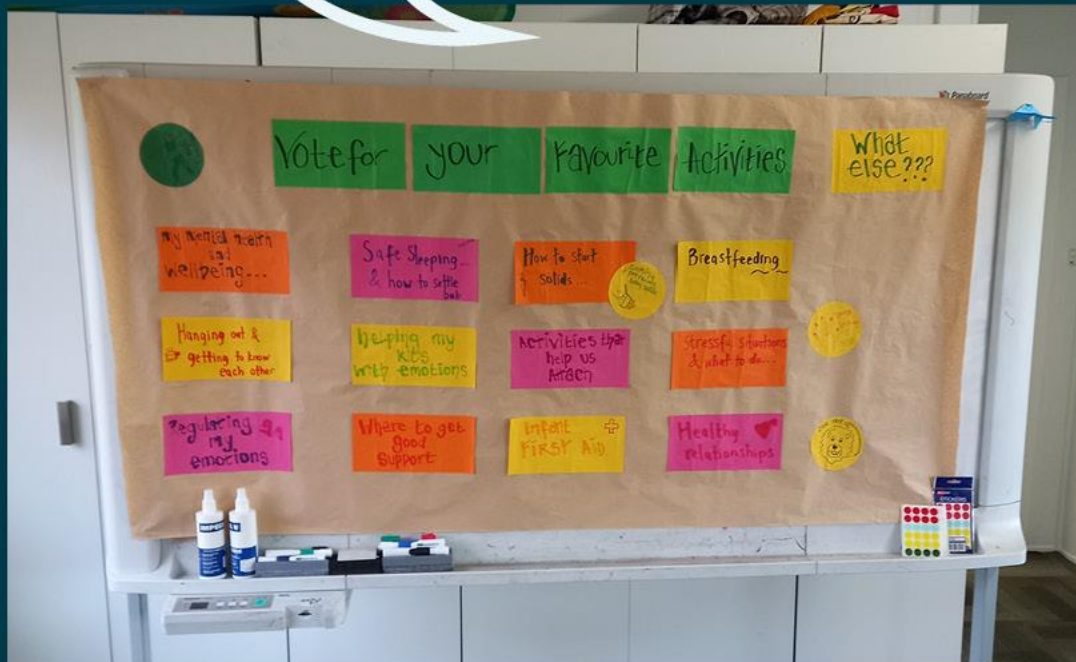
"Often there is not enough focus on genuine relationship and trust building in other programs."



"Make sure it doesn't feel like a group for bad parents."

SUPPORT

- Young parents want pragmatic support
- Young parents want to learn about infant health and development
- Young parents want programs to incorporate choice and to meet them at their point of parenting
- Young parents are optimistic about their future and want to hear inspiring stories



THE ROLE OF A PEER SUPPORT WORKER

- Essential aspect of building relationships
- Encourages parents to tell their stories of strength in a way that validates their experience
- Young parents can observe the facilitator and peer worker role model positive working relationships, possible between professionals within the system and lived experience
- Assists young parents to build relationships with other group members

"The peer support worker will set this group apart."



SYSTEM CHALLENGES



Predictable barriers to participation



Assumption that referrals would be higher



Workers within the system appear to be system and trauma defined and are not optimistic about young parent's future



Parents experience a lack of transparency from the system and this makes it difficult to navigate service support

