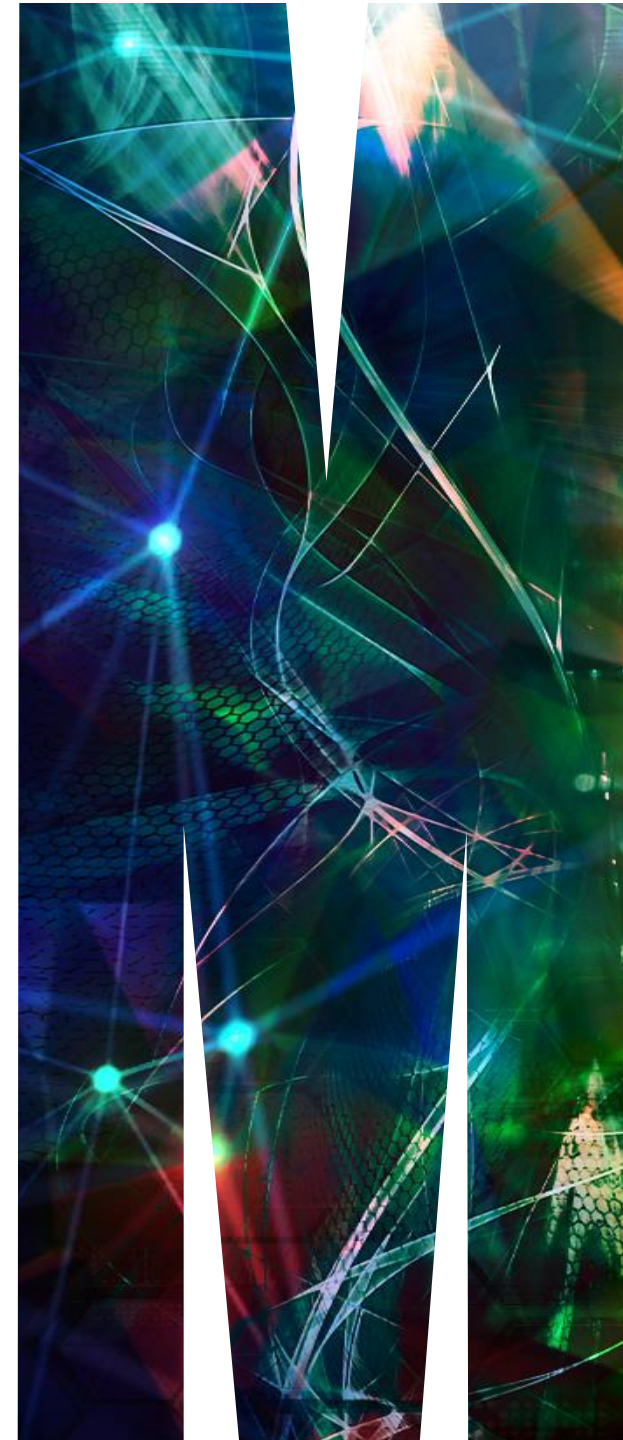


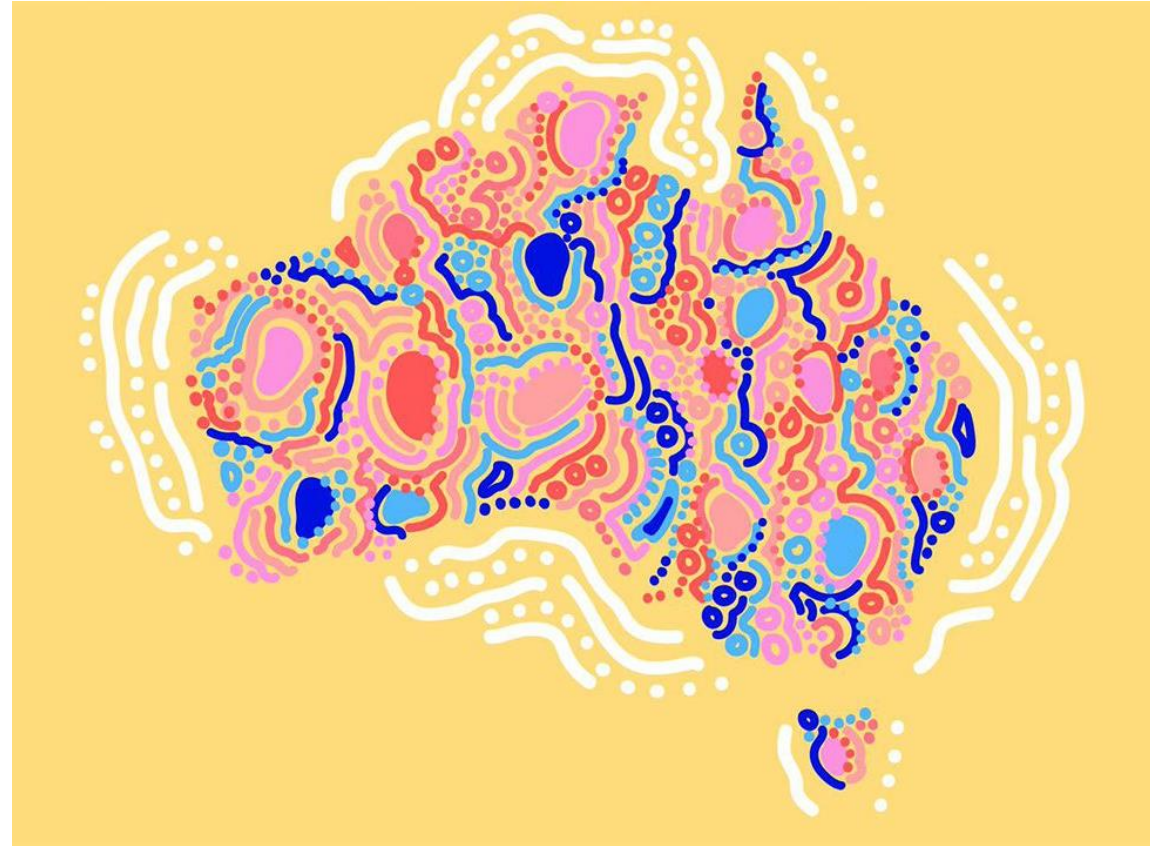
Victorian Early Parenting Centres Outcomes Framework



OPEN Symposium 26 October 2023



Acknowledgement



The Victorian Early Parenting Centres Outcomes Framework

2022



Dr Mandy O'Connor
Helen Cunningham
Sue White
Professor Helen Skouteris



Expanding Victoria's Early Parenting Centres Network

The number of Early Parenting Centres (EPCs) across the state is expanding from 3 to 13 centres.

The goal is to ensure all services operate as an effective network with:

- shared approaches to delivery
- a collaborative approach to quality and service, across the sector.

A key element identified for the expansion includes 

Outcomes, data and reporting

We propose developing a common outcomes framework that would provide the basis for care planning and review, and ongoing quality improvement.

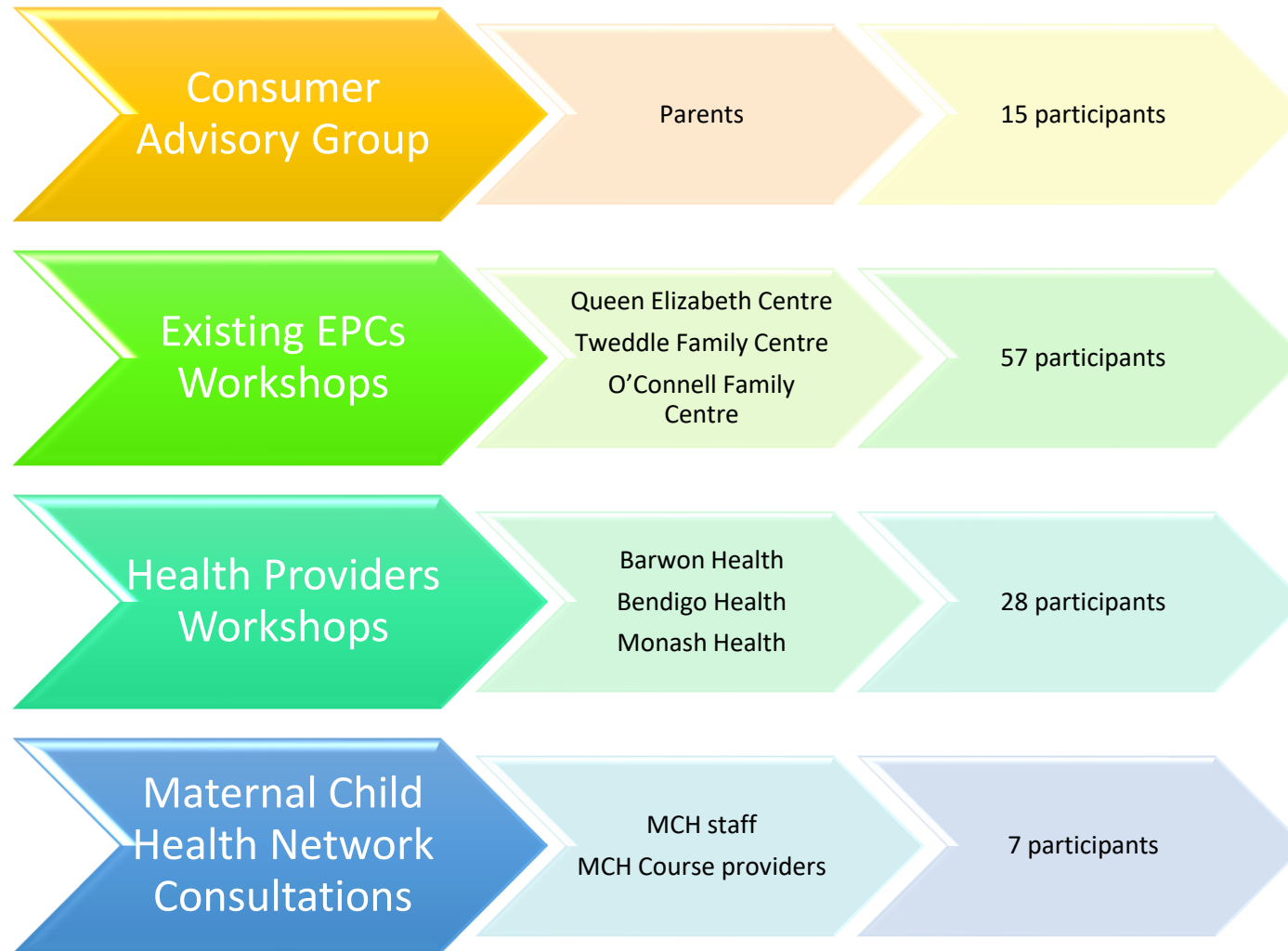
Key performance indicators for EPCs will be redeveloped to better identify whether needs are being met efficiently and effectively. We will also consider streamlining EPC client service reporting, and ways to bring EPC data systems into better alignment with maternal and child health and other health services.

Expanding Victoria's early parenting centre network 2019–24: strategic framework (Vic. Gov 2019)

The Queen Elizabeth Centre and Monash University Health and Social Care Unit were funded by the Department of Health to develop an Early Parenting Centres Outcomes Framework for the Victorian EPCs network.

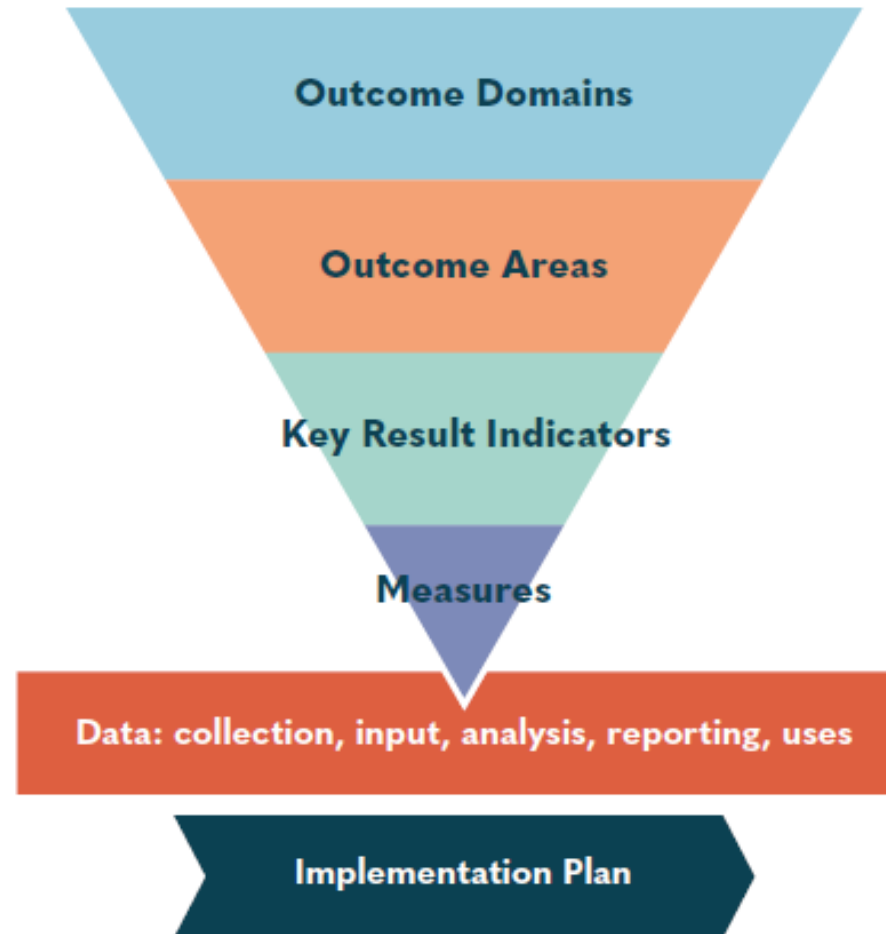
Collaborative workshops and consultations

Conducted during 2021

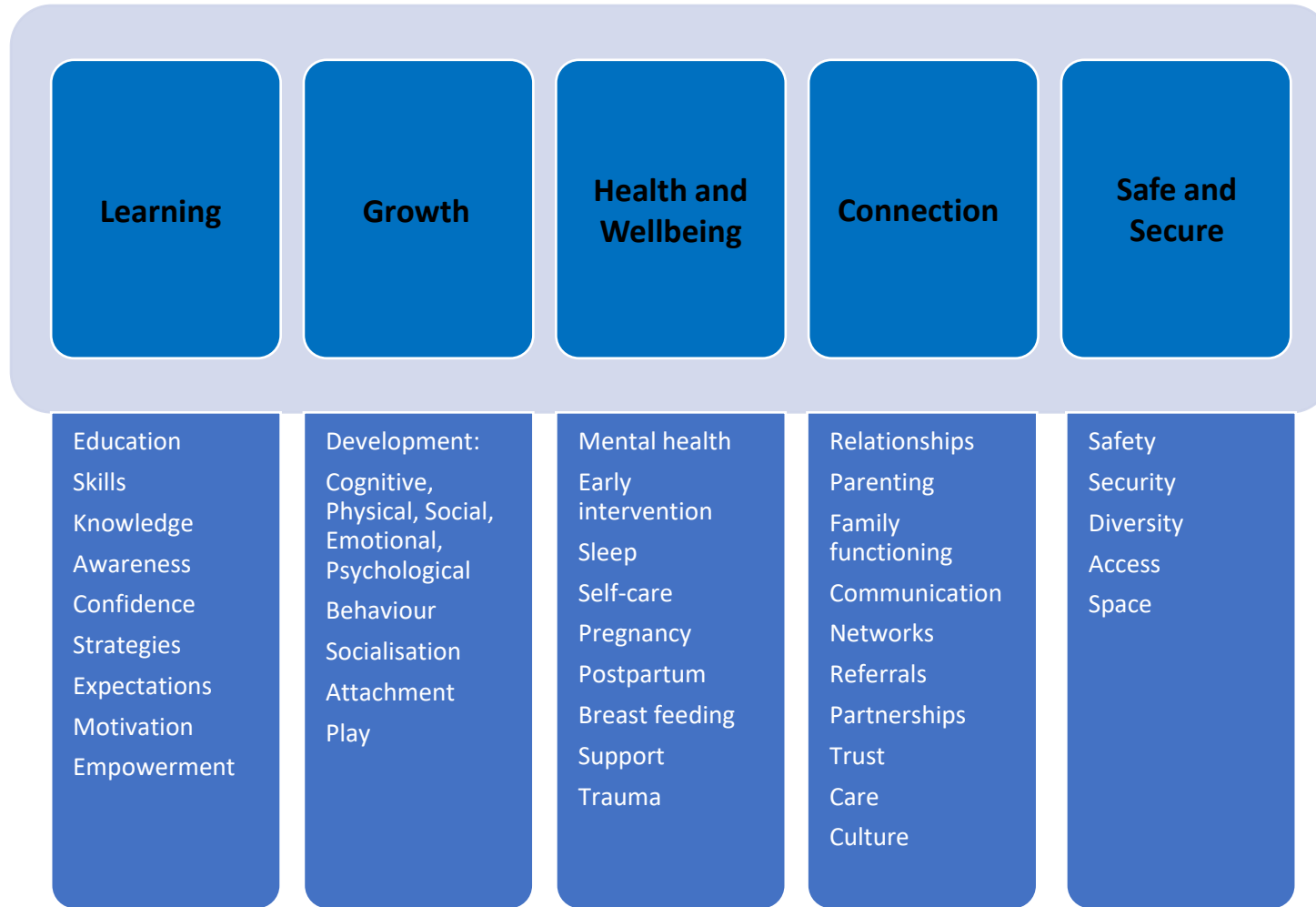


Topics:
Outcomes
Key result indicators
Measures and tools
Data - analysis and reporting
Implementation

Framework structure

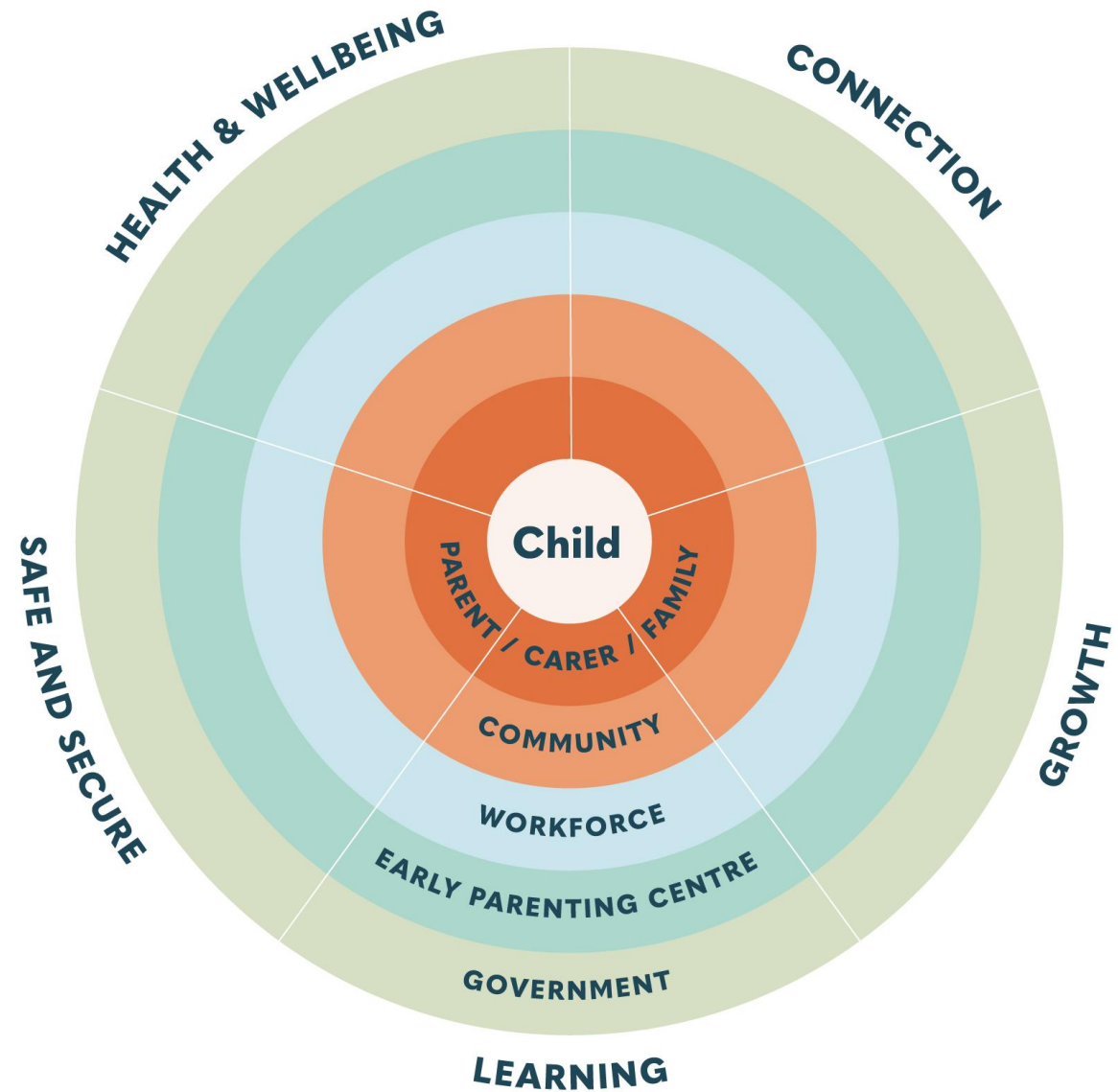


Outcome Domains



Full framework includes:
Outcomes areas
Key Result Indicators
Measures and tools

EPC Outcomes Framework



Socio-ecological Level	Outcomes				
	Health and Wellbeing	Connection	Growth	Learning	Safe and Secure
Child	Children are healthy and well	Children are nurtured, engaged and supported	Children are constantly developing	Children have skills and knowledge to be successful learners and teachers	Children are safe and secure
Parent/Carer/Family	Families are healthy and well	Families are nurtured, engaged and supported	Families and children are developing together	Families have skills and knowledge to be successful learners and teachers	Families are safe and secure
Community	EPCs and communities together support health and wellbeing	EPCs and communities together nurture, engage and support families	EPCs and communities together support child and family development	EPCs and communities together contribute to learning success	EPCs and communities together are safe and secure
Workforce	Workforce is healthy and well	Workforce is nurtured, engaged and supported	Workforce is developing together and with families	Workforce has skills and knowledge to be successful learners and teachers	Workforce is safe and secure
EPC	EPC environments are healthy	EPCs nurture, engage and support families, staff and community	EPC environments support child, family and workforce development	Early Parenting Centres contribute to learning success	EPC environments are safe and secure
Government	Governments support the health and wellbeing of children and families	Governments support and engage communities, EPCs and families	Governments support EPCs and communities to promote child, family and workforce development	Governments contribute to child, family and EPC learning success	Governments support safe and secure environments for families, the workforce and the community

Table 1. Health and Wellbeing Outcome Domain

Socio-ecological Level Outcomes	Outcome Area	Key Result Indicator	Measure/Tool
Child <i>Children are healthy and well</i>	Mental and emotional wellbeing	Increase mental and emotional wellbeing, by decreasing risk factors and increasing protective factors	Karitane Parenting Confidence Scale Family Violence Screening and Identification Pre-Admission Form (PAF) Newborn Observation*
	Physical health including sleep and nutrition	Increase physical health	Child Family Action Plan Karitane Parenting Confidence Scale Immunisation status Feed and sleep chart Child review Breastfeeding status Family Violence Screening and Identification Pre-Admission Form (PAF)
Parent/Carer/Family <i>Families are healthy and well</i>	Mental health and emotional wellbeing	Increase support of mental health and emotional wellbeing	Child Family Action Plan Depression Anxiety Stress Scale (DASS) Family Violence Screening and Identification Links/referrals to other support services Pre-Admission Form (PAF)
		Identify and refer to health professionals	Edinburgh Postnatal Depression Scale (EPDS)* Antenatal Risk Questionnaire* Karitane Family Outcomes Tool* Difficult Life Circumstances (DLC)*
	Physical health including: Ante and post-natal care Breast feeding Sleep	Increase support of healthy eating and active lifestyle strategies Decrease smoking, drug and alcohol use	Links/referrals to other support services. i.e QUIT, GP, allied health and community services Family Violence Screening and Identification Pre-Admission Form (PAF) Community Life Skills (CLS)* Difficult Life Circumstances (DLC)*
	Wellbeing	Increase sense of wellbeing	Personal Wellbeing Index
Community <i>EPCs and communities together support health and wellbeing</i>	Early intervention and preventive health care (physical and emotional)	Increase early intervention and preventive care integrated across services	Links/referrals between services Service partnerships

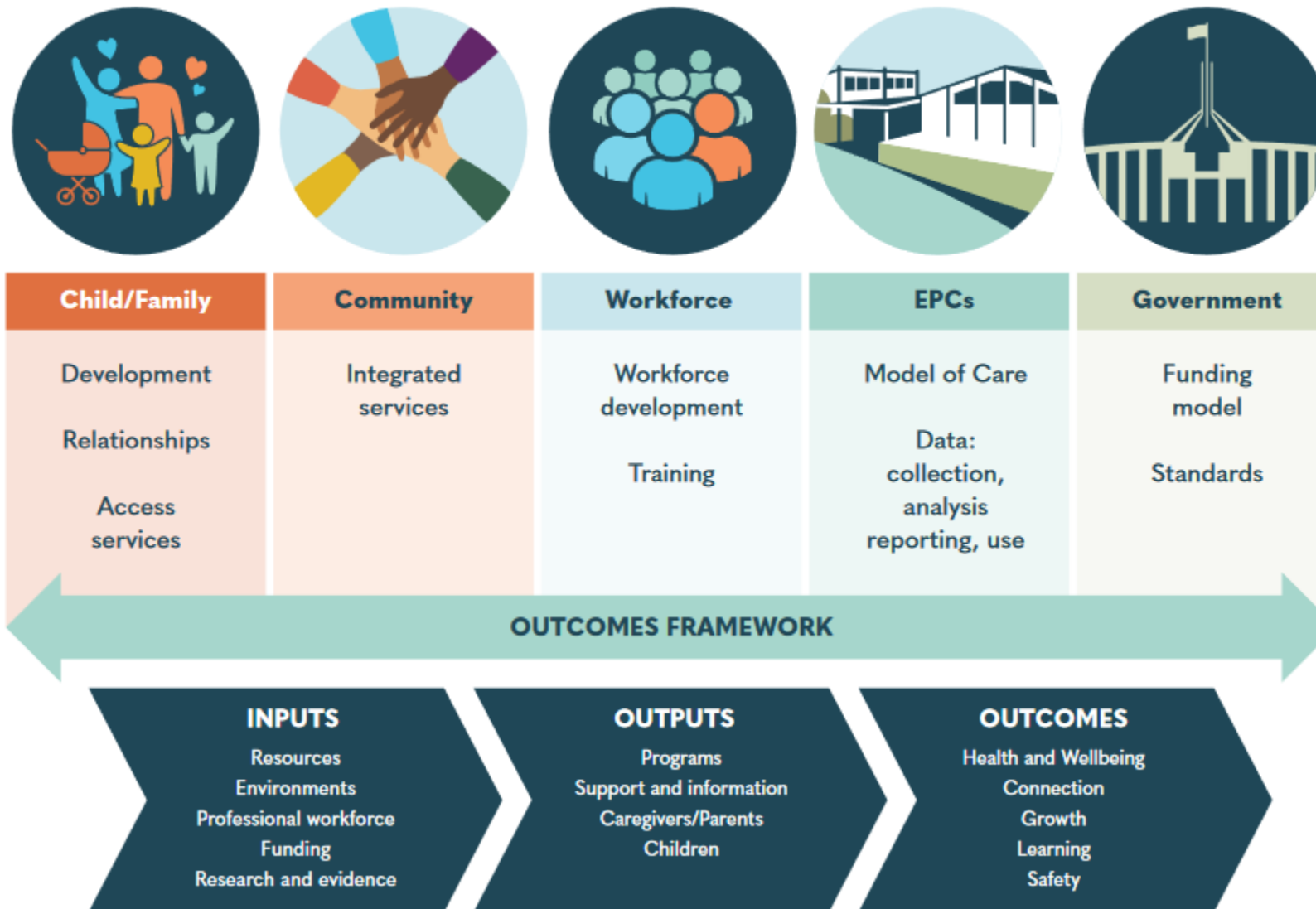
* Optional measure/tool

Table 1 Continued. Health and Wellbeing Outcome Domain

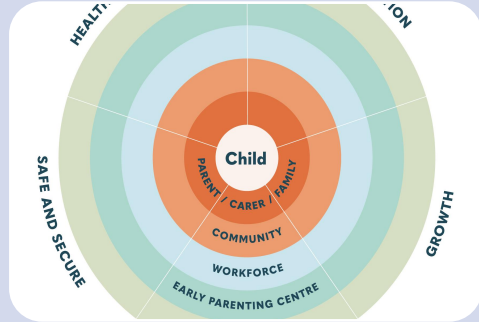
Socio-ecological Level Outcomes	Outcome Area	Key Result Indicator	Measure/Tool
Workforce <i>Workforce is healthy and well</i>	Mental and emotional wellbeing	Increase support of mental health and emotional wellbeing	People Matter Survey No. of reflective practice and supervision sessions EAP usage
	Wellbeing	Increase sense of wellbeing	People Matter Survey
	Physical health	Increase physical health	Immunisation rates Engagement in staff health and wellbeing program
Early Parenting Centre <i>Early Parenting Centres environments are healthy</i>	Workplace culture	Increase positive beliefs, interactions, behaviors, and attitudes in the workplace	People Matter Survey
	Early intervention and preventive health care (physical and emotional)	Increase support for workforce and families to engage in preventive health care Referrals to appropriate support for staff and families	Links/referrals Employee Assistance Program (EAP) usage
Government <i>Governments support the health and wellbeing of children and families</i>	Federal government	Children and families are healthy and well	Services aligned to: National Safety and Quality Health Care Standards (NSQHS)
	State government	Children and families are healthy and well	Service outcomes aligned to: Victorian Public Health and Wellbeing Plan Human Services Standards Best Interests Framework
		Children have a strong sense of wellbeing	Service outcomes aligned to: Victorian Public Health and Wellbeing Plan
		Safe, effective child/family centred care	Services aligned to: Safer Care Victoria Clinical Governance Framework Victorian Child Safe Standards Mandatory Reporting Best Interests Framework Client Voice Framework for Community Services

* Optional measure/tool

Logic Model



Implementation Planning



Outcomes
Framework



Implementation
Plan



Evidence-based
Practice

Implementation Owners

Local EPC Implementation Teams	Community of Practice	State-wide Implementation Support
<p>Senior EPC staff to guide and support local implementation</p> <p>Representing:</p> <ul style="list-style-type: none">• Clinical practice• People and Culture• Education• Information and Technology• Finance• Quality• Risk and safety	<p>Key representatives from each EPC to share:</p> <ul style="list-style-type: none">• Learnings• Information• Ideas• Skills <p>Ensuring consistency and fidelity</p> <p>New EPCs to join as they become established</p>	<p>Department of Health to support implementation through provision of</p> <ul style="list-style-type: none">• Guidance• Resources• Materials <p>Partnering with existing EPCs in the development of resources and materials</p>

EPC Outcomes Framework Implementation Strategies

Planning Strategies

Implementation goal 1: To successfully plan for the implementation of the Outcomes Framework

Consideration of planning elements including leadership, knowledge, internal reviews, and stakeholder and consumer engagement.

Collectively these provide a strong foundation for the implementation of the Outcomes Framework. These strategies have the capacity to influence and promote positive communication, culture, leadership and vision in the adoption of the Outcomes Framework in EPCs.

Implementation approaches

- Leadership
- Readiness
- Knowledge
- Stakeholder engagement

EPC Outcomes Framework Implementation Strategies

Education Strategies

Implementation goal 2: To have the resources and support to educate and inform staff, consumers, community members and stakeholders about the Outcomes Framework and how it will be utilised in practice.

Embedding the Outcomes Framework into practice will involve: scoping existing training and practices, developing resources, preparing and delivering training, supporting translation to practice and establishing EPC Communities of Practice. These elements will influence building staff confidence and capability, embedding the measures, and contribute to sustaining the use of the framework.

EPC Outcomes Framework Implementation Strategies

Education Strategy

Implementation approaches

- Scope current enablers
- Scope clinical practice requirements
- Prepare clinical practice resources
- Prepare and deliver training
- Supporting translation to practice
- EPC Community of Practice

EPC Outcomes Framework Implementation Strategies

Data and Monitoring Strategies

Implementation goal 3: To ensure outcomes data, reporting and monitoring is consistent, accessible, streamlined and readily used across all levels of the Outcomes Framework.

A range of data and monitoring approaches / elements will enable the review of systems and alignment of the Outcomes Framework in existing systems; development of systems and tools; recording, translating and reporting of data and supports required. Collectively these will ensure interpretation, consistency and fidelity of outcomes being measured, and contribute to the understanding of the impact of EPCs.

Implementation approaches

- Review and align
- Systems and tools
- Data recording, translating and reporting
- Support

